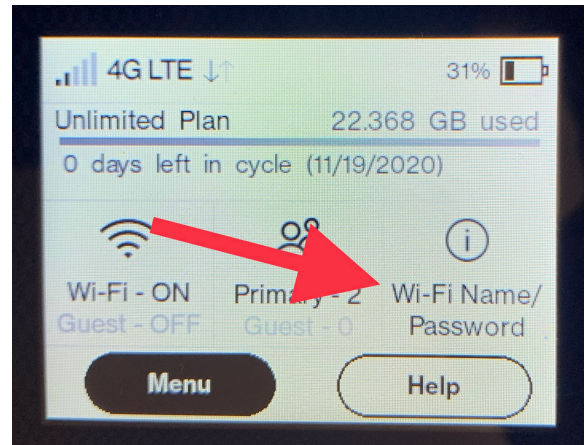
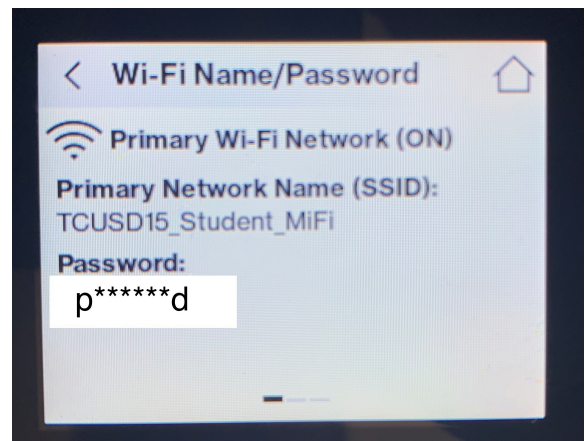


1. Power ON both devices.

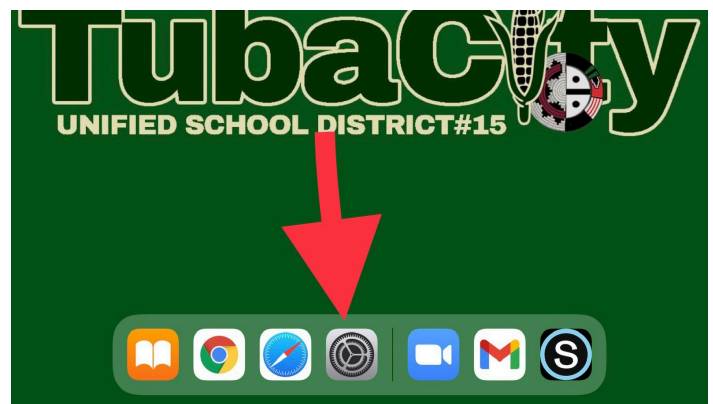
**2. On the MiFi, go to the
WiFi Name/Password**



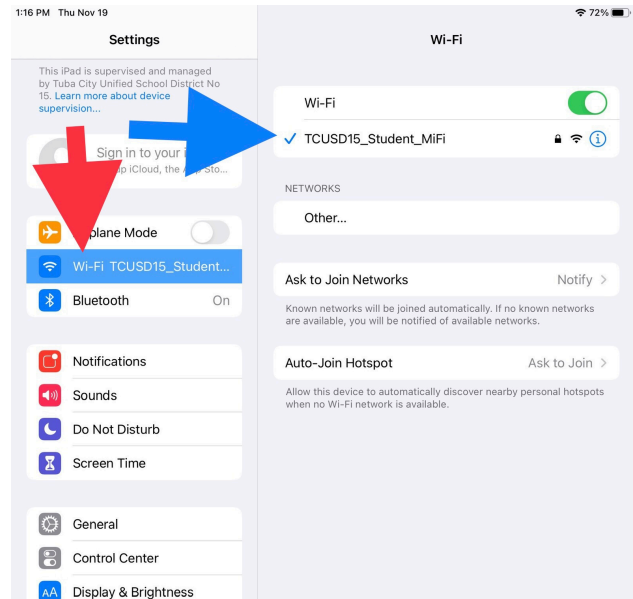
**3. WiFi Name will be here,
along with password.**



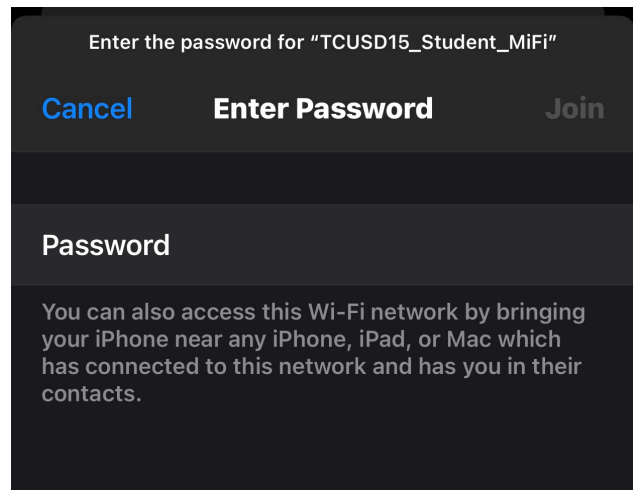
4. On the iPad go to Settings



5. In Settings, go to **WiFi. Select **name of MiFi** from #3.**



6. Type in password shown on MiFi.



7. All student issued iPads are preprogrammed with the Passwords.

8. After first connection, the MiFi and iPads will automatically connect when powered ON.