

Tuba City Unified School District

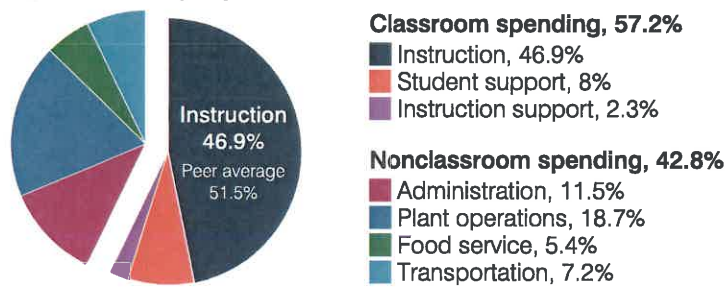
Coconino County
 Peer groups: Operational 5 and T-10, Achievement 6¹
 Legislative district(s): 7
 District location: Town
 Number of schools: 6
 Graduation rate (2018): 72%

Students attending; Size: 1,558; Medium
 5-year change in students attending: Less than 1%
 Special education population: 13%
 English learner population: 5%
 Poverty rate (2018): 32%
 Free/reduced meal eligibility: 93%

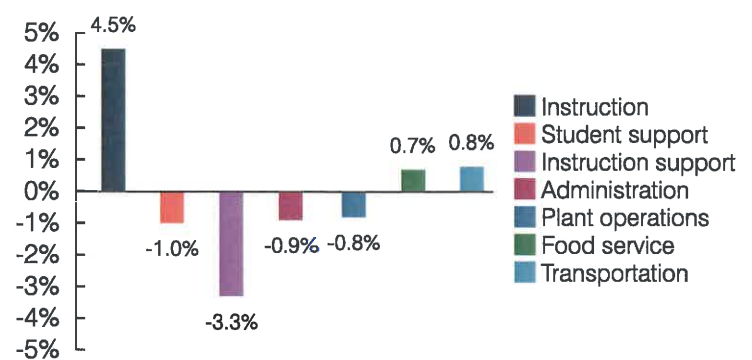
Instructional spending percentage by year

2001	2002	2003	2004	2005	2006	2007	2008	2009	2010	2011	2012	2013	2014	2015	2016	2017	2018	2019
47.4	47.7	47.4	47.5	47.7	47.9	44.8	43.7	44.5	43.3	41.1	42.7	42.2	42.4	41.6	41.2	42.2	43.7	46.9

Spending by operational area



Percentage point change in spending by operational area (fiscal year 2014 versus 2019)

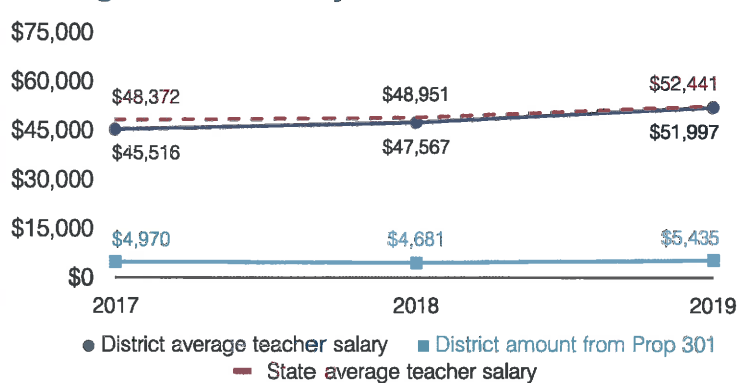


Operational measures relative to peer averages

Operational area	Measure	District	Peer average	State average
Administration	Cost per pupil	\$1,611	\$1,190	\$903
	Students per administrative position	53	60	66
Plant operations	Cost per square foot	\$7.13	\$5.67	\$6.49
	Square footage per student	368	257	158
Food service	Cost per meal	\$4.00	\$3.60	\$3.08
Transportation	Cost per mile	\$3.28	\$2.20	\$4.29
	Cost per rider	\$2,212	\$1,962	\$1,424

Very low Low Comparable High Very high

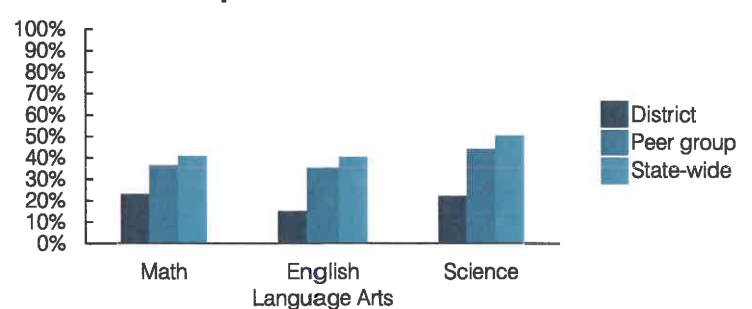
Average teacher salary and other measures



Per pupil spending

Spending by area	District		Peer average	State average
	2018	2019	2019	2019
Instruction	\$ 5,927	\$ 6,570	\$ 5,148	\$ 4,869
Student support	1,177	1,120	655	754
Instruction support	245	328	436	497
Administration	1,666	1,611	1,190	903
Plant operations	2,864	2,620	1,416	1,027
Food service	718	756	428	438
Transportation	960	1,013	546	417
Total operational	13,557	14,018	9,819	8,905
Land and buildings	2,659	470	1,012	1,086
Equipment	1,083	583	658	496
Interest	140	130	238	261
Other	29	11	84	180
Total nonoperational	3,911	1,194	1,992	2,023
Total per pupil spending	\$ 17,468	\$ 15,212	\$ 11,811	\$ 10,928

Students who passed State assessments²



¹ See Appendix A for information, such as districts included in each peer group, and Appendix B for sources and methodology.
² School letter grades are available at <https://azreportcards.azed.gov>.